

8Manage PM



8Manage Simple PM

Can help you simplify the project planning and execution process and makes everyone more informed



Activity Planning



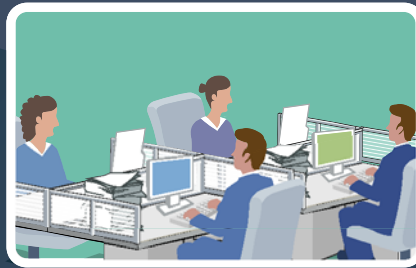
Issue Tracking & Reporting



Execution & Monitoring



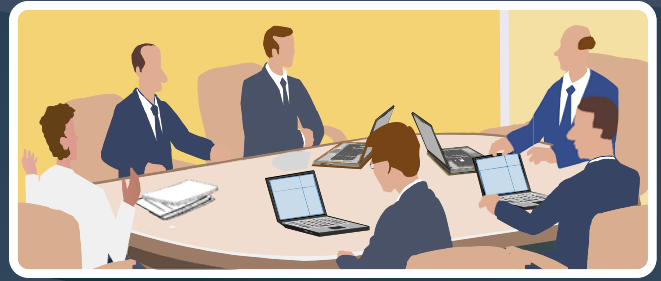
Communication Management



Resource & Cost Management



Real-time dashboard to record actions in real time and detect problems at the earliest possible time

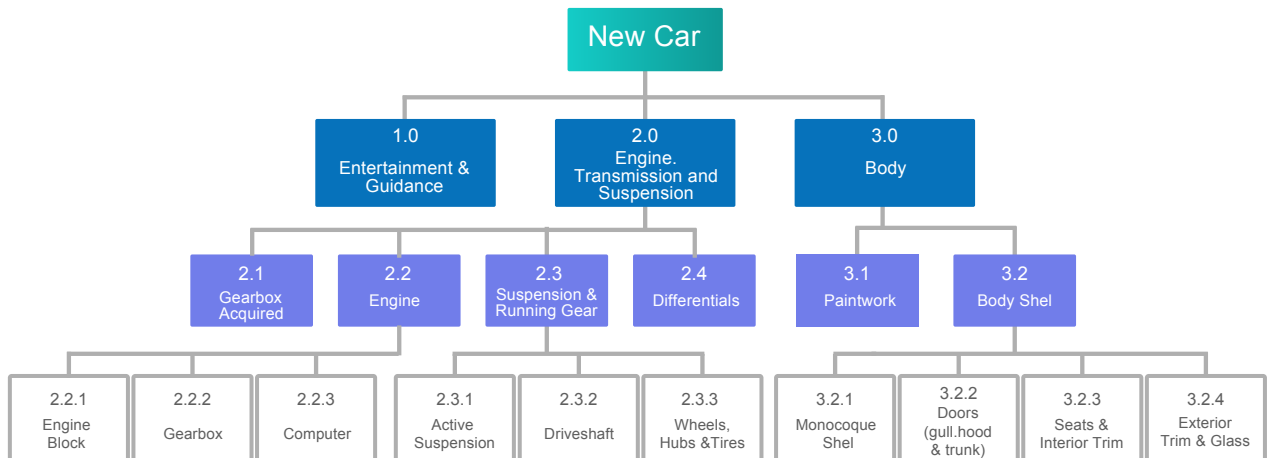


Timely & Accurate Information for effective judgment

SIMPLE PM

8Manage Simple PM improves communication for you and your team by keeping everyone more informed, organized and on schedule.

1. Activity Planning



8Manage Simple PM helps your project team intelligently develop and prioritize a project plan. Projects can be broken down into activities, activities can be assigned and project progress can be tracked in real-time.

- Configurable multi-tier, dynamic WBS activities
- Clear responsibility and accountability
- Mass editing and moving WBS activities
- Configurable activity dependency and time lags
- Schedule tracking and reporting

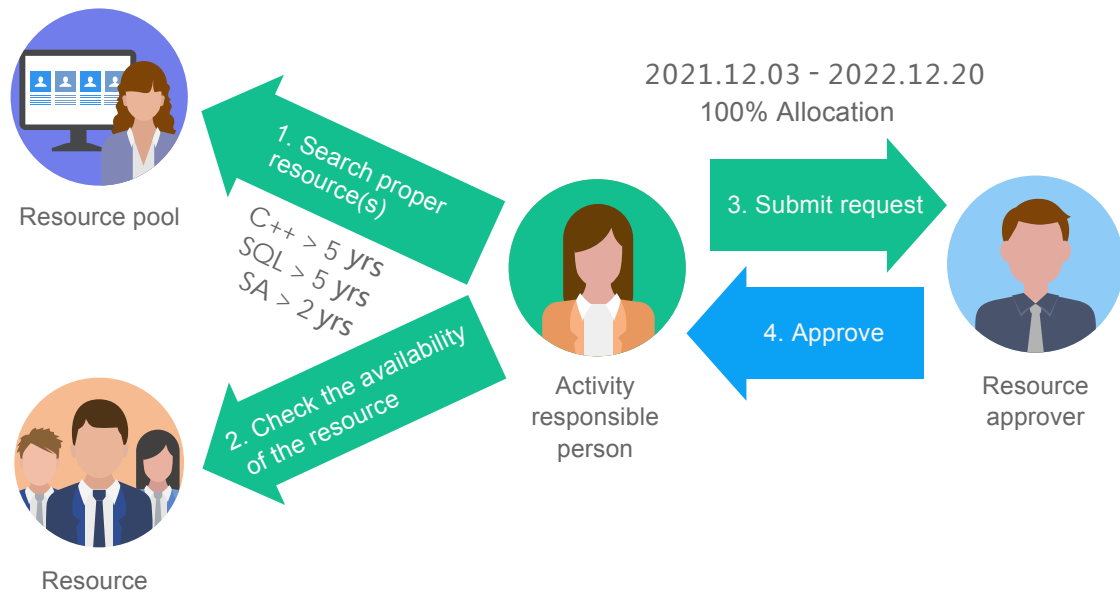
2. Execution Management



8Manage Simple PM delivers full traceability of project execution:

- Activity scheduling and execution management
- Deliverable scheduling and handoff management
- Real-time risk and problem detection
- Execution policy and control management
- Project and activity approval and re-approval management
- Complete audit trail

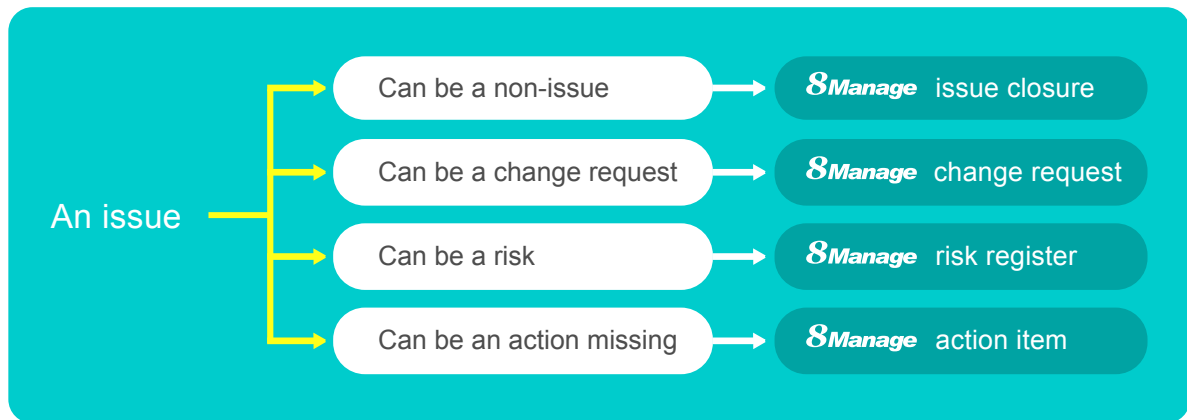
3. Resource & Cost Management



8Manage Simple PM enables you to effectively manage resource capacity and allocation - so you can always get the right resource for your project:

- Resource management by resource categories, skills and availability
- Auto compute forecast costs of resources required
- Tracking allocation time vs. actual utilization time
- Detection of overloaded and inadequate resources
- Tracking planned resource cost vs. actual resource cost

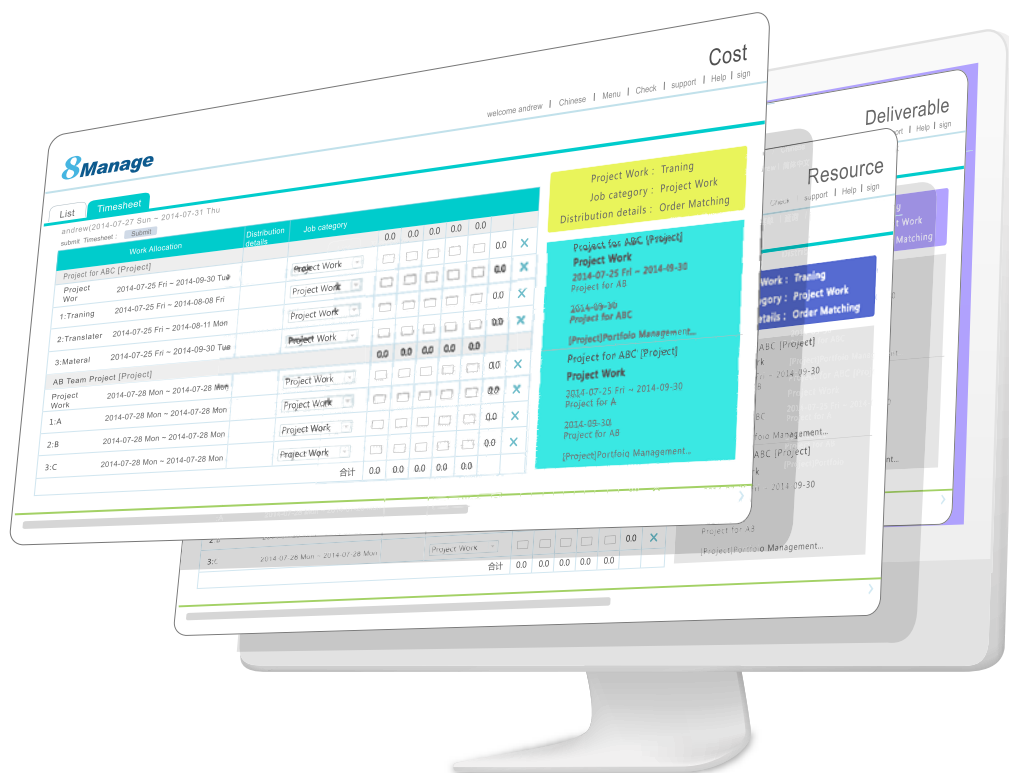
4. Issue Tracking & Reporting



8Manage Simple PM provides you with a powerful mechanism to organize and track issues, and to resolve them systematically.:

- Issue identification
- Issue analysis
- Response action item
- Systematical tracking
- WBS/Activities associated with issues

5. Real-time Monitoring and Tracking



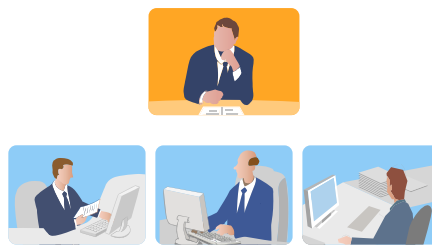
8Manage Simple PM provides the following dashboards for communicating status, identifying problems and tracking necessary actions:

- Project
- Resource
- Progress report
- Cost
- Deliverable

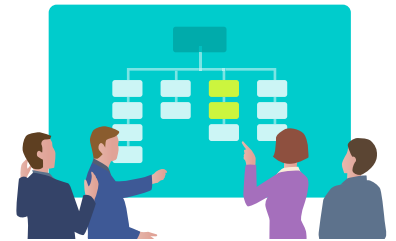
6. Communication Management



Unstructured Email



Structured Interactions



Informed Decisions

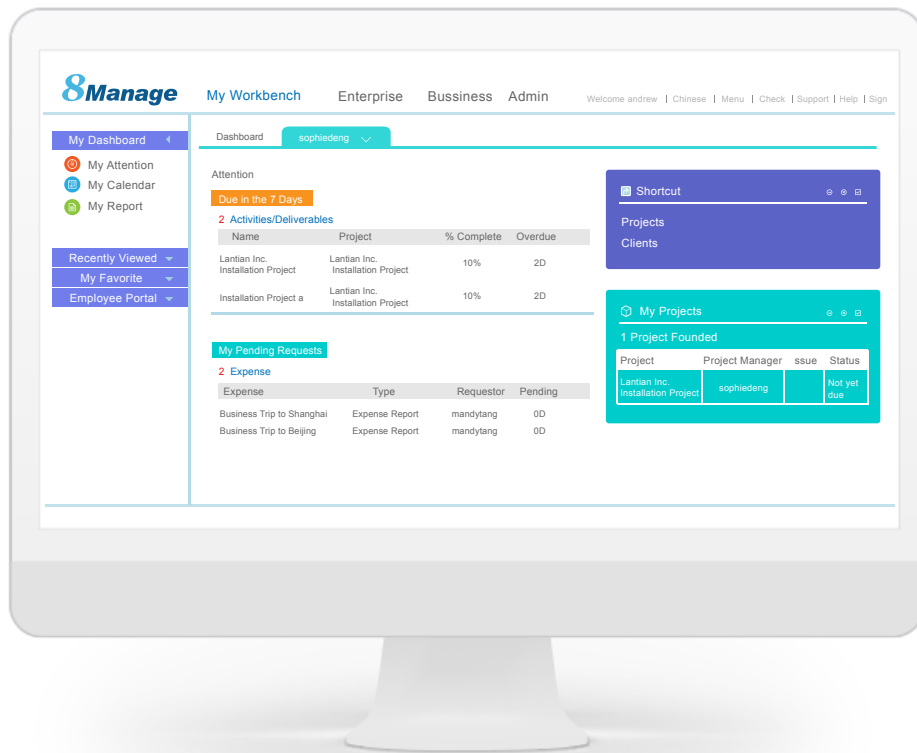
8Manage Simple PM facilitates structured communications and provides real-time information, allowing teams to make informed decisions :

- Real-time chat
- Reality check
- Discussion forum
- Auto email notification

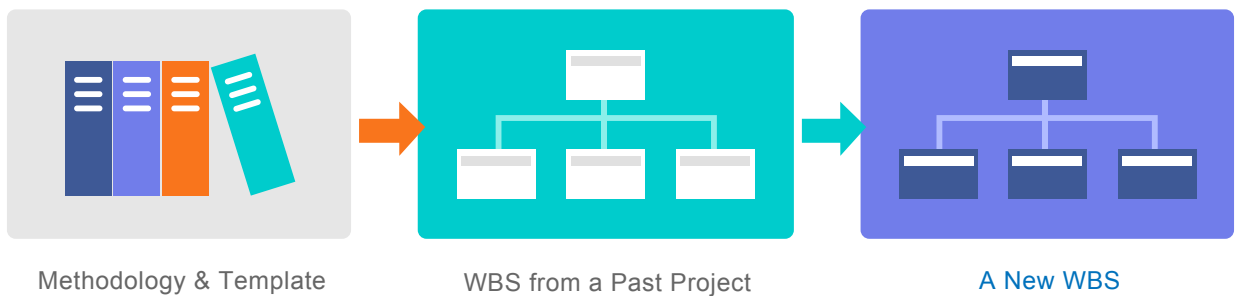
7. Configurable Personal Workbench

8Manage Simple PM provides you with a role-based, personal workbench to facilitate your day-to-day work and to reflect your performance. You can always detect potential problems in real-time from your dashboard.

- Role-based personal workbench with KPI
- Personalized task and issue reporting
- Active links to drill down
- Totally configurable



8. Methodology Template



8Manage Simple PM provides a methodology template for various application areas to aid project plan creation :

- Initiate new project with templates
- Save a project plan as template
- Template includes tasks, deliverables, scheduling, duration, issues etc.

8Manage can provide best combination of standard products & redevelopment services for enterprise management and over 500 corporations in Asia are using our following modules on-premises or SaaS:

8Manage PPM : Project and Portfolio Management

8Manage Timesheet : Resource Time and Cost Management

8Manage SRM : Supplier Management, e-Procurement and e-Tender

8Manage ERP : Enterprise Full Automation

8Manage CRM : Corporate Client CRM and Consumer CRM

8Manage ITSM : Service Management

8Manage HCM : Human Capital Management

8Manage OA : Office Automation

8Manage EDMS : Electronic Document Management System

8Manage Kanban : Visual Agile and Lean